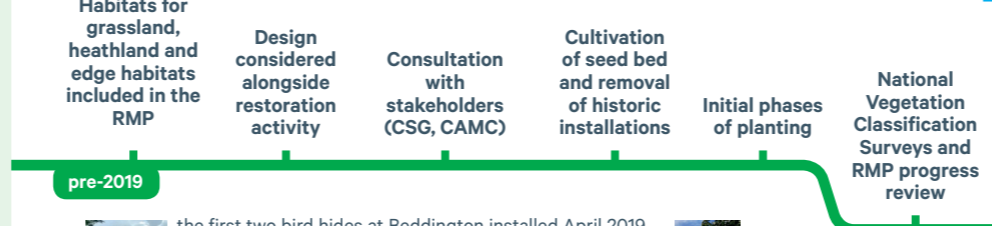
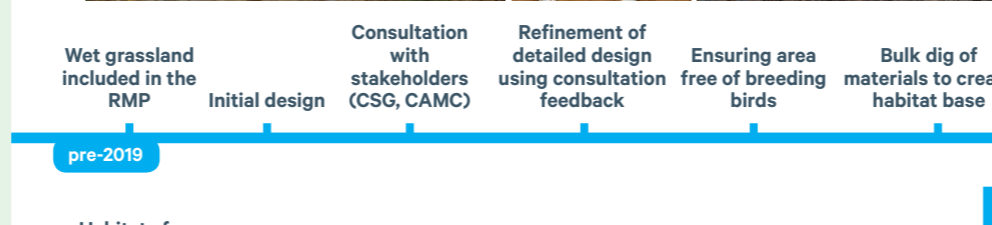
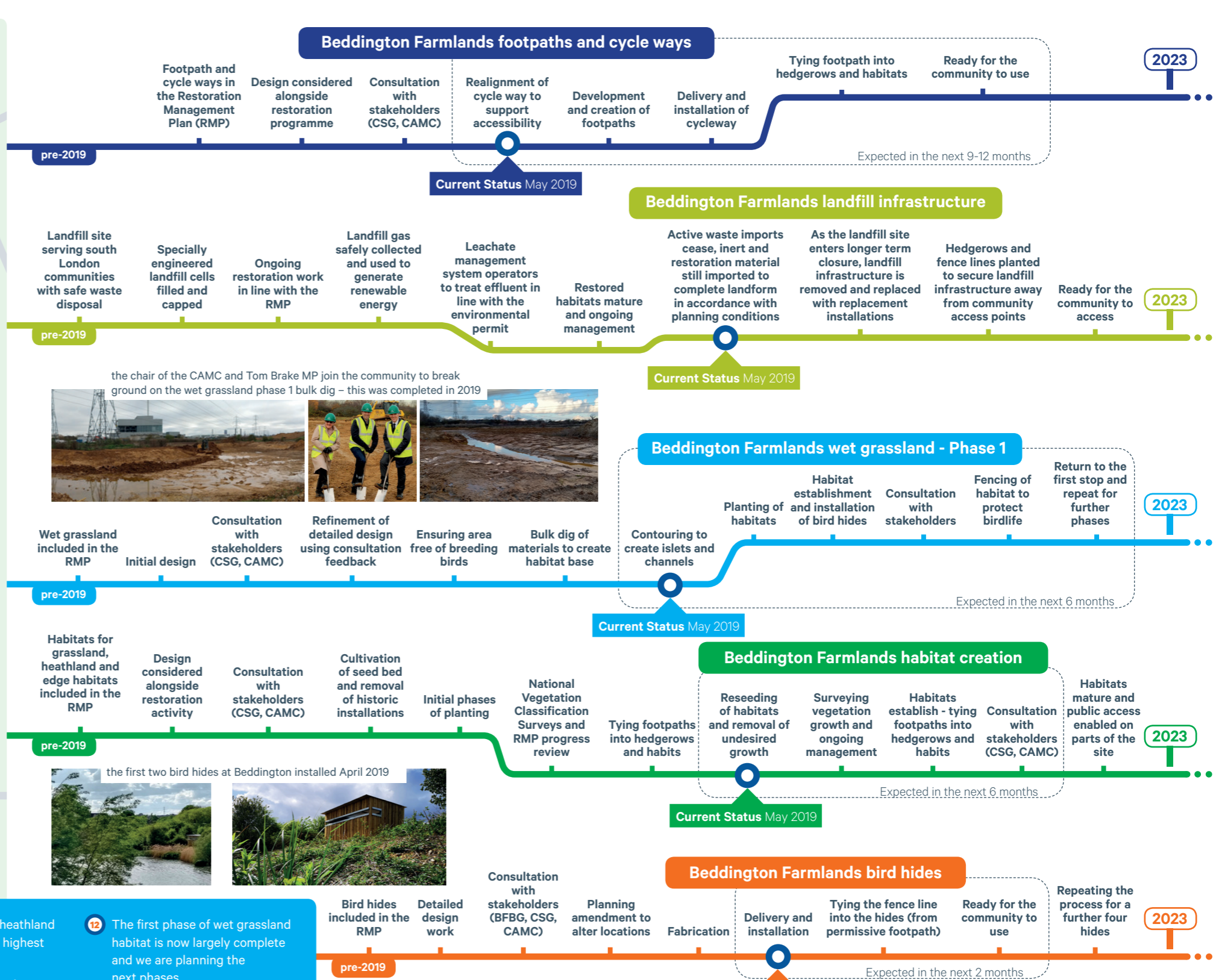


# Beddington Farmlands Restoration Roadmap 2019-2023

Viridor is committed to high quality restoration, habitat creation and stewardship at the Beddington Farmlands to ensure its status as an important nature conservation area in south London. The site has a Restoration Management Plan outlining how the restoration should be carried out, and also a Conservation

Management Scheme detailing the objectives for conservation and public access. Both of these are complex technical documents and we wanted to create an easy to understand roadmap of the progress being made to date to share with the local community.



- 1 Creating access to the Farmlands from Beddington Park
- 2 Managed Reedbed habitats for wetland and wading birds
- 3 Creation of meadowland and field enclosures
- 4 Footpaths will be mown in this area for public access
- 5 Access will be established from Beddington lane (near Asda)
- 6 The Permissive footpath allows access today to view the Farmlands
- 7 Across the Farmlands hedgerows and fence lines will be planted to create habitats
- 8 Three bird hides have been installed to date (these are accessible from the permissive path)
- 9 Acidic grassland and heathland will be created on the highest point of the site
- 10 We support birdlife by planting sacrificial crops onsite (living bird feeders)
- 11 A cycle path will be installed through the site connecting Mitcham and Beddington Park
- 12 The first phase of wet grassland habitat is now largely complete and we are planning the next phases
- 13 Within the ERF there is an education centre for community visits
- 14 Viridor will continue to manage historic sludge drying beds to the north of the Farmlands

